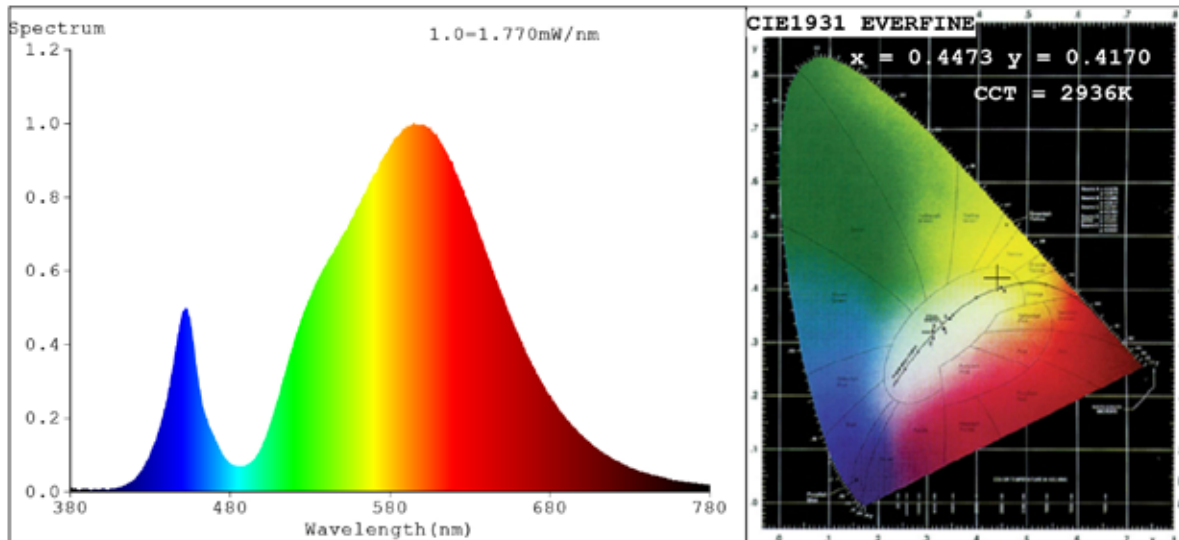


Spectrum Test Report



Color Parameters:

Chromaticity Coordinate: $x=0.4473$ $y=0.4170$ $u'=0.2517$ $v'=0.5279$
 CCT=2936K (Duv=0.0037) Dominant WL:Ld =581.9nm Purity=59.4%
 Ratio:R=21.6% G=77.1% B=1.3%; Peak WL:Lp=594.9nm FWHM=125.3nm
 Render Index:Ra=71.2 CRI=63.0 TM30:Rf=72 Rg=94
 R1 =68 R2 =80 R3 =89 R4 =68 R5 =65 R6 =70 R7 =81
 R8 =48 R9 =0 R10=51 R11=61 R12=37 R13=70 R14=93 R15=62

Photo Parameters:

Flux = 87.77 lm Eff. : 87.77 lm/W Fe = 250.7 mW Scotopic:98.92 S/P:1.127

Electrical parameters:

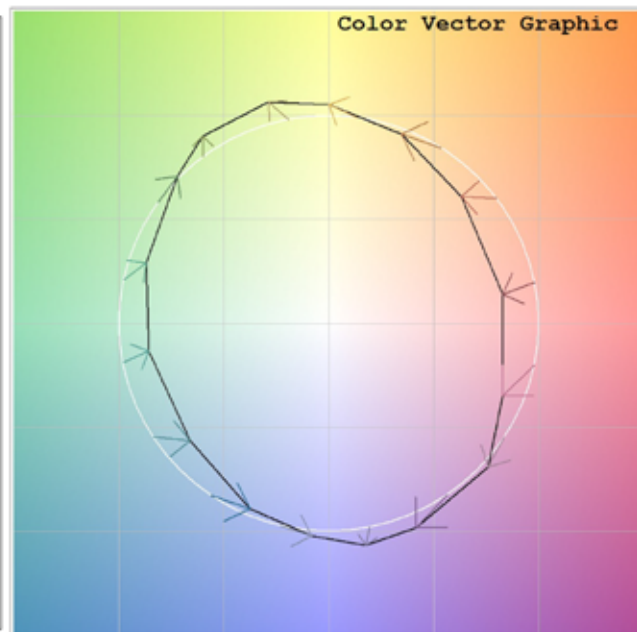
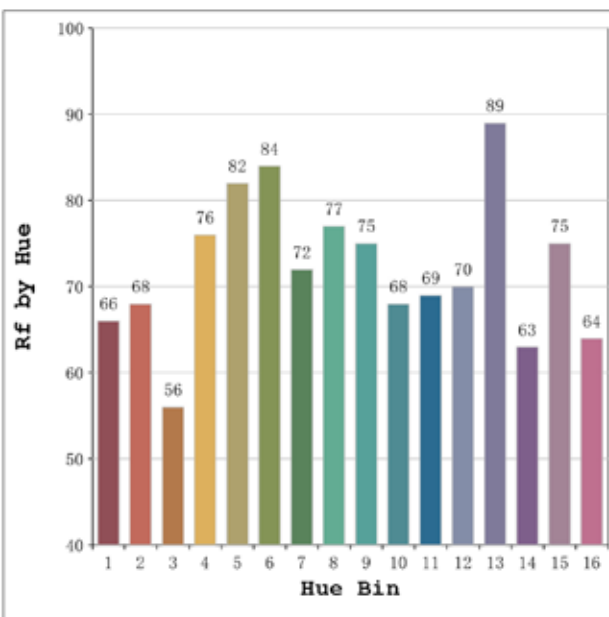
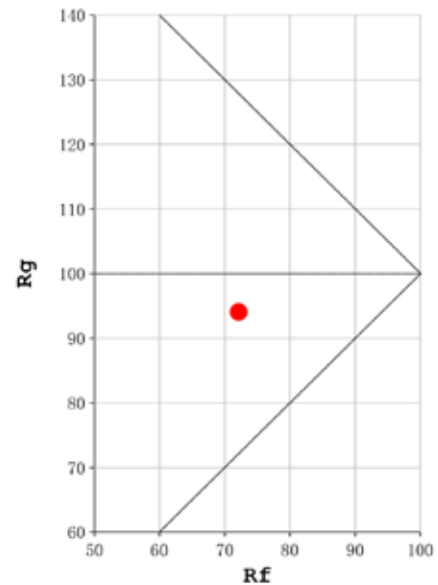
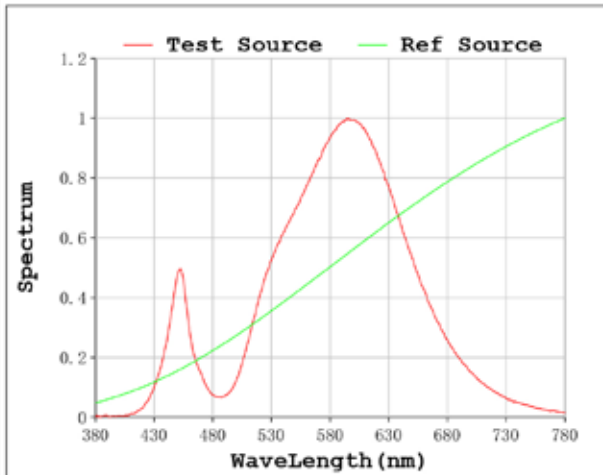
V = 11.998 V I = 1.596 A P = 1 W PF = 1.000

Status: Integral T = 5000 ms Ip = 18716 (29%)

Model:Ecoled Mérida 3000K
 Tester:Sergio Carneros
 Temperature:25Deg
 Manufacturer:Luz negra

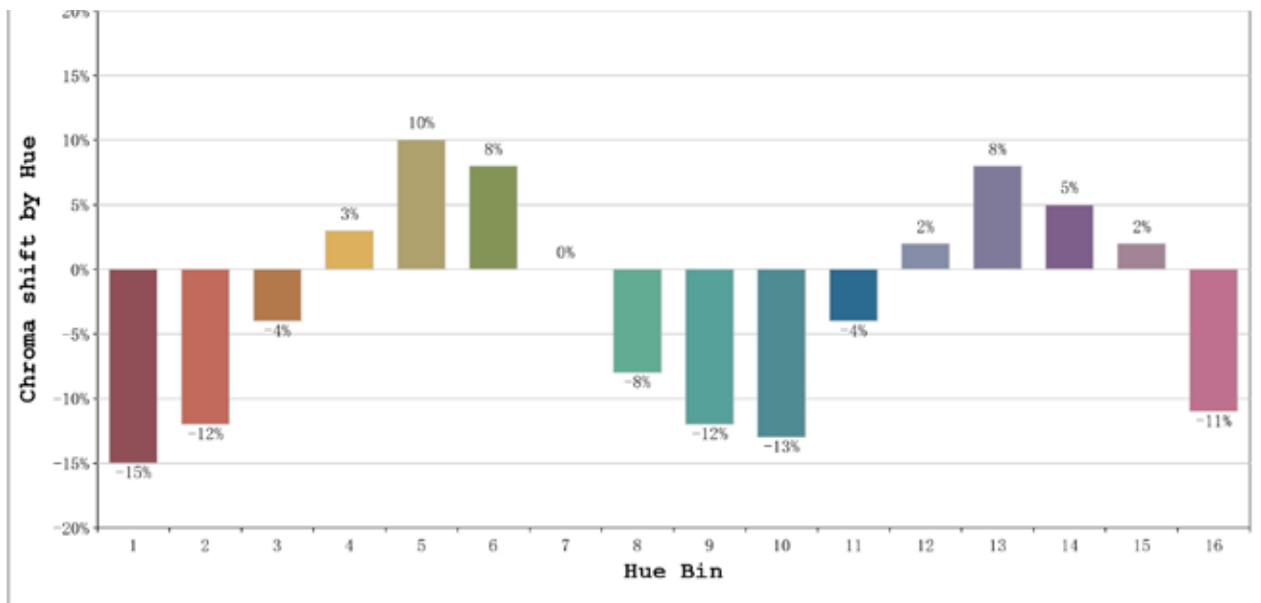
Number: 43.026
 Date:2023-03-04 11:12:10
 Humidity:57%
 Remarks:1 módulo led

Rf: 72 **CCT: 2936 K** **u': 0.2517**
Rg: 94 **Duv: 0.0037** **v': 0.5279**



Model:Ecoled Mérida 3000K
 Tester:Sergio Carneros
 Temperature:25Deg
 Manufacturer:Luz negra

Number: 43.026
 Date:2023-03-04 11:12:10
 Humidity:57%
 Remarks:1 módulo led



			Graphic shift(%)	
Hue Bin	Hue Angle	Rf	Chroma	Hue
1	0.0° - 22.5°	66	-15	-2
2	22.5° - 45.0°	68	-12	10
3	45.0° - 67.5°	56	-4	19
4	67.5° - 90.0°	76	3	15
5	90.0° - 112.5°	82	10	8
6	112.5° - 135.0°	84	8	-4
7	135.0° - 157.5°	72	0	-14
8	157.5° - 180.0°	77	-8	-9
9	180.0° - 202.5°	75	-12	-2
10	202.5° - 225.0°	68	-13	11
11	225.0° - 247.5°	69	-4	19
12	247.5° - 270.0°	70	2	15
13	270.0° - 292.5°	89	8	-2
14	292.5° - 315.0°	63	5	-20
15	315.0° - 337.5°	75	2	-15
16	337.5° - 360.0°	64	-11	-17

Model:Ecoled Mérida 3000K
Tester:Sergio Carneros
Temperature:25Deg
Manufacturer:Luz negra

Number: 43.026
Date:2023-03-04 11:12:10
Humidity:57%
Remarks:1 módulo led